

Current concepts in RET-related genetics, signaling and therapeutics

Ivan Plaza-Menacho^{1,2*}, Grzegorz M. Burzynski^{1*}, Jan Willem de Groot³, Bart J.L. Eggen⁴ and Robert M.W. Hofstra¹

¹ Department of Genetics, University Medical Center Groningen, University of Groningen, Postbus 30 001, 9700 RB Groningen, The Netherlands

² Present address: Breakthrough Breast Cancer Research Centre, Institute of Cancer Research, London SW3 6JB, UK

³ Surgical Oncology and Endocrinology, University Medical Center Groningen, University of Groningen, 9700 RB Groningen, The Netherlands

⁴ Department of Developmental Genetics, University of Groningen, 9700 RB Groningen, The Netherlands

The receptor tyrosine kinase RET is expressed in cell lineages derived from the neural crest and has a key role in regulating cell proliferation, migration, differentiation and survival during embryogenesis. Germline and somatic mutations in RET that produce constitutively activated receptors cause the cancer syndrome multiple endocrine neoplasia type 2 and several endocrine and neural-crest-derived tumors, whereas mutations resulting in nonfunctional RET or lower expression of RET are found in individuals affected with Hirschsprung disease. This review focuses on the genetics and molecular mechanisms underlying the different inherited human neural-crest-related disorders in which RET dysfunction has a crucial role and discusses RET as a potential therapeutic target.

Introduction

The human gene *RET* is localized on chromosome 10 (10q11.2) and contains 21 exons [1]; alternative splicing generates three isoforms, which contain 51 (RET51), 43 (RET43) and 9 (RET9) amino acids in the carboxyl (C)-terminal tail [2]. RET51 and RET9 are the most prevalent and best-characterized isoforms *in vivo*; RET43 has not yet been characterized. The RET51 isoform shows the highest transforming and kinase activity *in vitro* [3], and several observations suggest that these isoforms have different tissue-specific effects during embryogenesis [4]. Monoisoformic RET9 mice are viable and normal, whereas the monoisoformic RET51 mice (which lack RET9) have kidney hypoplasia and lack enteric ganglia from the colon [4].

RET (Figure 1) is the receptor for members of the glial cell-derived neurotrophic factor (GDNF) family of ligands (GFLs): namely GDNF, Neurturin, Persephin and Artemin [5]. To stimulate RET, these GFLs first need to form a complex with their glycosylphosphatidylinositol (GPI)-anchored co-receptor, a member of the GDNF receptor- α family (GFR α 1–GFR α 4), after which the GFL–GFR α complex activates RET [6,7]. The GFRs differ in their specificity for GFLs (Figure 1).

During embryogenesis, RET is expressed in the developing excretory system, in all lineages of the peripheral nervous system, and in motor and catecholaminergic neurons of the central nervous system [8]. In addition, RET is also expressed in C-cells of the thyroid and tumors originating from these cells, in medullary thyroid carcinomas (MTCs), and in other tumors of neural crest origin such as pheochromocytomas and neuroblastomas [9].

The role of RET in cancers was first described when somatic rearrangements of *RET* (named *RET/PTC*) showing constitutive tyrosine kinase activity were found in papillary thyroid carcinomas (PTCs) [10]. These RET/PTC oncoproteins, of which over ten have been described, are all chimeric proteins in which the amino (N)-terminal region of different proteins is fused to the catalytic domain of RET [11]. Subsequently, germline mutations that give rise to constitutively activated RET proteins were discovered as the cause of the cancer syndrome ‘multiple endocrine neoplasia type 2’ (MEN2) [12]. By contrast, mutations causing loss of function of the RET protein were found to be associated with Hirschsprung disease: a developmental disorder characterized by the absence of enteric ganglia in the intestinal tract [13].

In this review, we focus on current concepts in the genetics and molecular mechanisms underlying the different inherited human neural crest disorders in which RET dysfunction plays a crucial role, and we further discuss new developments in which RET is a therapeutic target.

Wild-type RET activation and signaling

Wild-type RET signaling is crucial for the development of the enteric nervous system (ENS), kidney organogenesis and spermatogenesis [14]. Activation of the tyrosine kinase domain of RET occurs through transient homodimerization induced by the formation of a macromolecular GFL–GFR α –RET complex, which involves lipid rafts (reviewed by Saarma [15]).

Dimerization and activation of wild-type RET result in phosphorylation of its intracellular tyrosine residues, which act as docking sites for various adaptor proteins (Figure 2). For an excellent review that discusses in

Corresponding author: Hofstra, R.M.W. (r.m.w.hofstra@medgen.umcg.nl).

* Authors contributed equally.

Available online 18 September 2006.

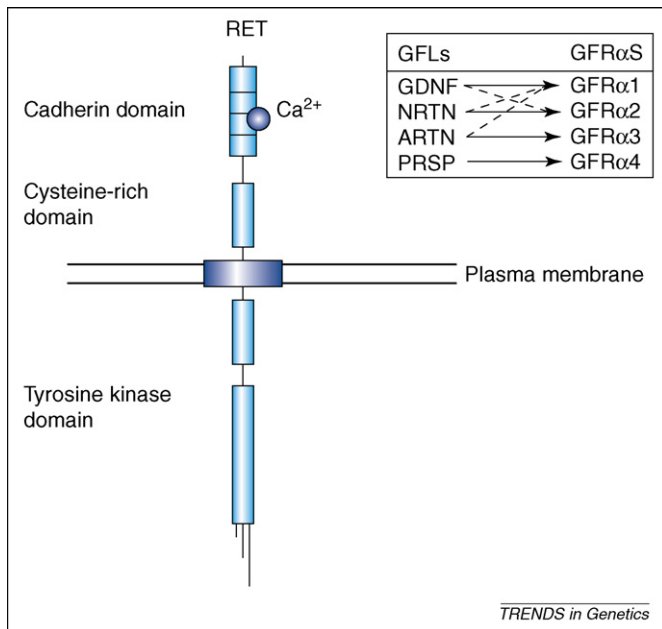


Figure 1. The RET protein, its functional domains, ligands and co-receptors. Left, functional domains of the three RET isoforms. Right, canonical (unbroken lines) and noncanonical (broken lines) interactions of the RET ligands GDNF, Neurturin (NRTN), Persephin (PSPN) and Artemin (ARTN) with their GFR α co-receptors. Lipid rafts are depicted as a purple box in the plasma membrane.

detail the signaling pathways activated by the wild-type RET receptor, we refer to Ichihara *et al.* [16]. GDNF-independent activation of RET has been also observed on binding of nerve growth factor to the receptor TRKA [17].

Neural crest disorders associated with *RET* mutations *MEN2*

Germline missense mutations resulting in constitutive activation of RET cause MEN2, a dominant inherited cancer syndrome that affects neuroendocrine organs [12]. Depending on the tissues affected, three different clinical subtypes can be distinguished.

- (i) MEN2A, which is characterized by medullary thyroid carcinoma (MTC) in all affected individuals (100%); pheochromocytoma, a tumor of the adrenal medulla cells (50%); and hyperparathyroidism (15–30%) [18].
- (ii) MEN2B, which is also characterized by MTC (100%) and pheochromocytoma (~50%); instead of hyperparathyroidism, however, affected individuals develop a more complex clinical phenotype including ganglioneuromas on the tongue, lips and eyelids, intestinal ganglioneuromas, thickened cornea nerves and a marfanoid habitus. MEN2B is considered to be the most aggressive subtype of MEN2 with the earliest age of onset [19].
- (iii) Familial MTC (FMTC), usually considered to be the third MEN2 subtype, is characterized by the manifestation of only MTC in four or more members of an affected family.

Hirschsprung disease

Hirschsprung disease is a complex genetic disorder characterized by aganglionosis of variable length of the distal gastrointestinal tract. Genetic dissection has led to the identification of ten genes and four loci associated with Hirschsprung susceptibility [20], most of which cause

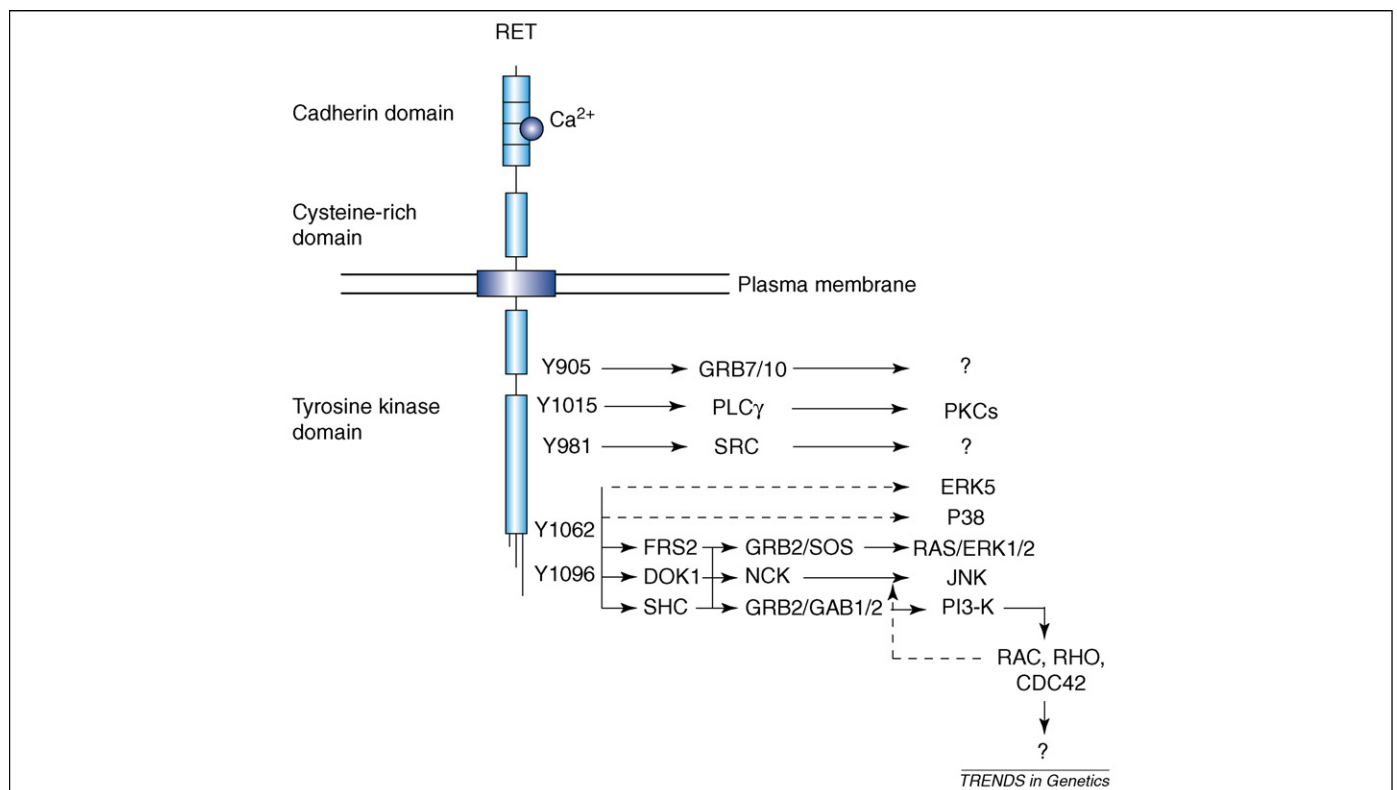


Figure 2. RET signaling pathways. Activation of RET leads to autophosphorylation of tyrosine residues in the cytoplasmic tail of the receptor that act as docking sites for several signaling transducers. Tyr1096 is present only in the RET51 isoform. Unbroken arrows indicate a direct functional interaction; broken arrows indicate indirect functional interactions.

Table 1. Genes involved in (syndromic) Hirschsprung disease^a

Gene	Map position	Phenotype	Inheritance
<i>RET</i>	10q11.2	Non-syndromic Hirschsprung-MEN2A/FMTC	Dominant, incomplete penetrance
<i>GDNF</i>	5p13	Non-syndromic	Non-Mendelian
<i>Neurturin</i>	19p13	Non-syndromic	Non-Mendelian
<i>EDNRB</i>	13q22	Shah-Waardenburg	Recessive
		Non-syndromic	Dominant (<i>de novo</i> in 80%)
<i>EDN3</i>	20q13	Shah-Waardenburg	Recessive
		Non-syndromic	Dominant, incomplete penetrance
<i>SOX10</i>	22q13	Shah-Waardenburg	Dominant (<i>de novo</i> in 75%)
<i>ECE-1</i>	1p36	Congenital heart malformation	<i>De novo</i> dominant
<i>ZFHX1B</i>	2q22	Mowat-Wilson	<i>De novo</i> dominant
<i>KIAA1279</i>	10q21.3-q22.1	Goldberg-Shprintzen	Recessive
<i>PMX2b</i>	4p12	Congenital central hypoventilation syndrome (CCHS)	Dominant (<i>de novo</i> in 90%)
Unknown	3p21	Non-syndromic, S-HSCR	Non-Mendelian
Unknown	9q31	Non-Syndromic, L-HSCR	Dominant, incomplete penetrance
Unknown	19q12	Non-syndromic, S-HSCR	Non-Mendelian
Unknown	16q23	Shah-Waardenburg	Non-Mendelian

^aReviewed in Ref. [20].

syndromic Hirschsprung disease (Table 1). Of the genes identified so far, *RET* has been shown to be the most important.

Various *RET* mutations have been identified and correlated with disease phenotype (Figure 3). The functional consequences of the different *RET* mutations have also been characterized [12,21,22] (Table 2). A recent update on all MEN2- and FMTC-associated *RET* mutations identified so

far has been provided by Arighi *et al.* [14]. The *RET* mutations associated with Hirschsprung disease can be classified according to the dysfunctional mechanism of action of the RET protein (Figure 4, Table 3).

Oncogenic RET activation and signaling in MEN2

Despite the clear correlation between mutations found in MEN2 and their associated phenotypes, the molecular

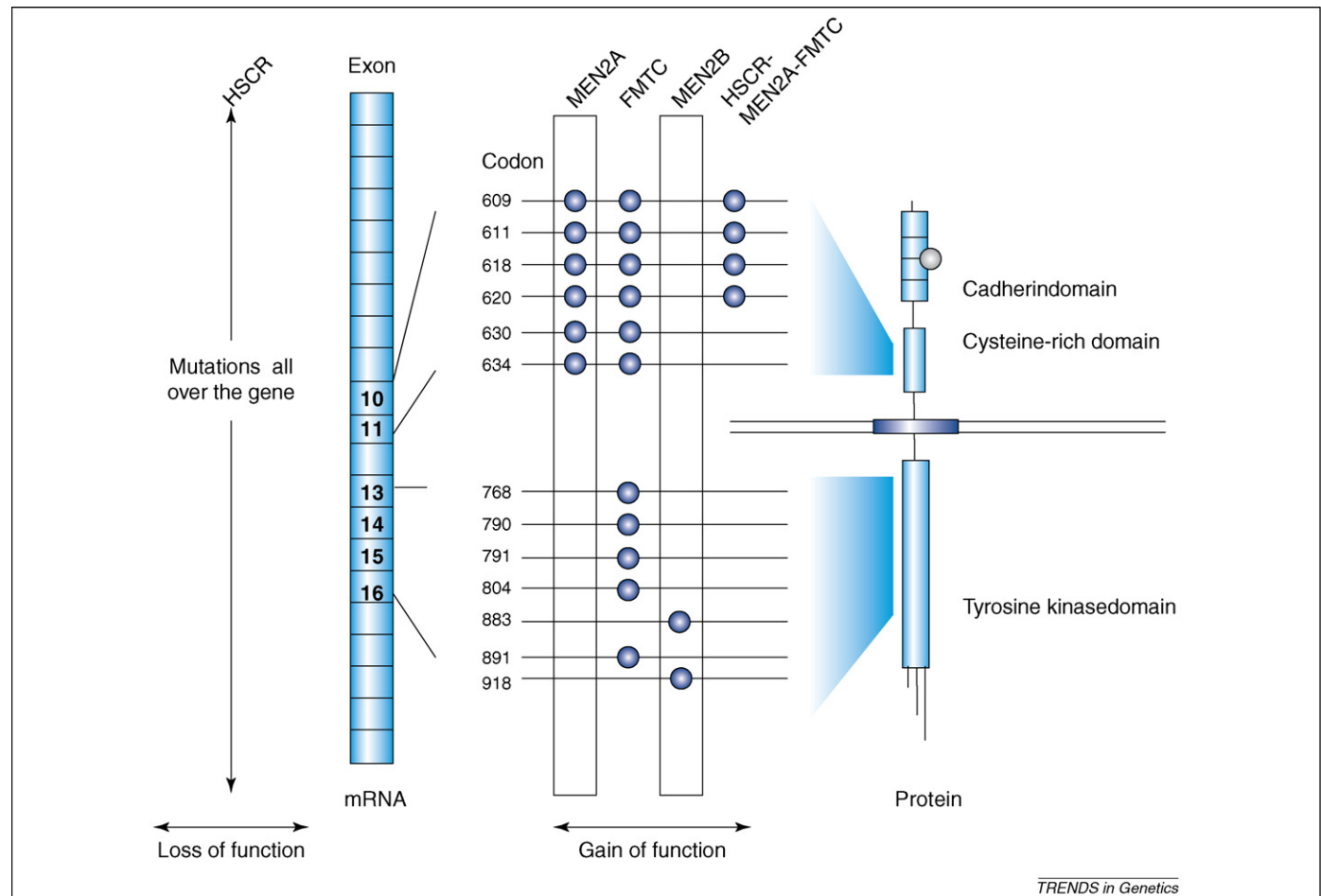


Figure 3. Germline missense mutations in *RET* associated with MEN2 and Hirschsprung disease (HSCR). Shown are the structure of the RET mRNA and protein. The codons mutated, the associated clinical entities, and the location of these mutations in relation to the exons and structural domains are indicated.

Table 2. Subdivision of *RET* mutations^a

Phenotype	Codons mutated/position of the mutation	Consequences of the mutation
MEN2	Level 1 C609, E768, L790, Y791, V804, S891	Mild activating <i>RET</i> mutations predisposing to FMTC
	Level 2 C611, C618, C620, C634	Moderate activating <i>RET</i> mutations predisposing to FMTC or MEN2A
	Level 3 A883, M918	Aggressive <i>RET</i> mutations predisposing to MEN2B
HSCR	Class 1 Mutations in the extracellular domain	Mutations disrupting <i>RET</i> maturation and/or transport to the membrane
	Class 2 C609, C611, C618, C620	Moderate activating <i>RET</i> mutations predisposing to a combination of Hirschsprung disease and FMTC or MEN2A
	Class 3 Mutations in the catalytic domain	Mutations altering the catalytic activity of <i>RET</i>
	Class 4 Mutations surrounding residue Y1062	Mutations interfering with <i>RET</i> substrates binding to this tyrosine
	Class 5 Mutations in regulatory sequences	Changing the expression of the <i>RET</i> gene

^aMutations are subdivided according to the predisposing phenotype, the position in the coding sequence and the consequences of the mutations for the encoded proteins [21–23]. The levels of the MEN2 mutations represent a scale of aggressiveness of the associated phenotype (level 1 represents the least aggressive and level 3 the most aggressive phenotype).

mechanisms that connect the mutated receptors with their different clinical subtypes are far from understood. Mutations affecting the extracellular cysteine-rich domain of *RET* result in the replacement of a crucial cysteine residue and the loss of an intramolecular disulfide bond, thereby facilitating the formation of an intermolecular disulfide bond between two (mutated) *RET* monomers and producing a constitutively activated receptor. Intracellular mutations, associated usually with FMTC and always with MEN2B, signal independently of GDNF as monomeric oncoproteins. These oncoproteins show not only an altered catalytic activity but also an altered substrate specificity because, unlike wild-type *RET*, they phosphorylate substrates that are usually preferred by cytoplasmic tyrosine kinases such as SRC and ABL [3]. It has been shown, however, that GDNF can further enhance *RET* activity of most MEN2A proteins and in MEN2B [23–25]. Furthermore, a different pattern of *RET* receptor autophosphorylation has been found for MEN2A-mutated (*RET*-MEN2A) and MEN2B-mutated

(*RET*-MEN2B) *RET* proteins [26,27]. As a consequence, different sets of phosphotyrosine-mediated downstream signaling pathways will be triggered by *RET* mutants associated with specific disease phenotypes, which might explain the distinct clinical features observed.

This hypothesis has been partially corroborated by several studies over the past few years. For example, Liu *et al.* [26] have shown that, as compared with wild-type *RET*, *RET*-MEN2B mutants lack phosphorylation at Tyr1096, directly leading to a decrease in binding of GRB2 to *RET* [26]. *RET*-MEN2B oncoproteins also trigger higher levels of activated PI3K and its downstream signaling molecules [24]. In addition, expression of *RET*/*PTC2*-MEN2B, in contrast to that of wild-type *RET*/*PTC2*, results in activation of the cytoskeleton protein Paxillin [28]. Furthermore, *RET*-MEN2B mutants trigger higher activation of Jun N-terminal kinase (JNK) [29]. These data suggest that the high levels of activated AKT and JNK contribute to the MEN2B phenotype. Along the same lines, phosphorylation of Tyr1062 of *RET* and its association with

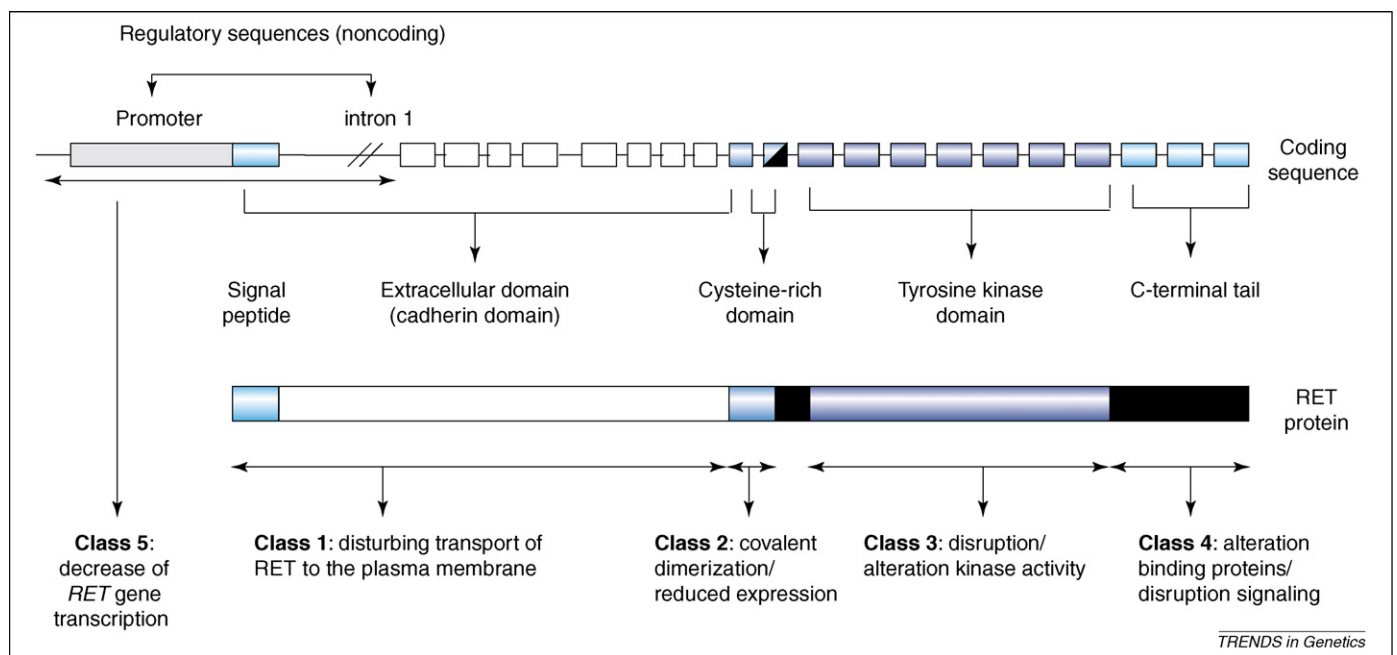


Figure 4. Classification of Hirschsprung-associated *RET* mutations. Shown are the different types of *RET* mutation associated with Hirschsprung disease, the domains of the gene or protein affected, and their functional consequences. The mutations are classified as follows. Class 1, mutations affecting coding sequences in the extracellular domain of *RET*, resulting in disturbed transport of *RET* to the plasma membrane. Class 2, mutations affecting the cysteine-rich domain of *RET*, resulting in covalent dimerization of the *RET* proteins and reduced expression of *RET* at the plasma membrane. Class 3, mutations targeting the kinase domain of *RET*, causing disruption or alteration of the catalytic activity of the receptor. Class 4, mutations located at the C-terminal tail, affecting protein-binding sites and thus disrupting signaling. Class 5, mutations located in regulatory sequences (promoter and intron 1), resulting in a decrease in *RET* mRNA levels.

Table 3. Biological properties of different RET mutant proteins in NIH-3T3 cells and mice

Codon mutated in <i>RET</i>	Transforming activity in NIH-3T3	Maturation of the protein	Promoter/knock-in /knockout	Mouse phenotype	Refs
C6090Y	+	++			[78]
C611Y	+	++			[78]
C618Y	+	++			[78]
C620R	++	++			[78]
C630R	++				[78]
C634R	+++/+ + + + +	++++	Calcitonin gene related peptide/calcitonin promoter	MTC	[79]
C634R			Moloney murine leukemia virus repeat	C-cell hyperplasia/MTC in 50% of mice; mammary or parotid gland adenocarcinoma	[80]
A883F	+++++				[81]
M918T	+++++		Dopamine-hydroxylase promoter	Benign neuroglial tumors	[81–82]
			Knock-in (heterozygous)	C-cells and chromaffin cells hyperplasia	[83]
			Calcitonin promoter	C-cells and chromaffin cell hyperplasia (early onset) and male reproductive defects	[84]
RET			Knockout	MTC (in 3 out of 8) Renal dysgenesis and lack of enteric neurons; C-cells affected	[85]

SHC are stronger for RET-MEN2B than for RET-MEN2A mutants, resulting in higher activation of the Ras/ERK and the PI3K/AKT signaling pathways [25]. Also, interestingly, the ligand-induced activation of AKT by wild-type RET is dependent on the localization in lipid rafts, and this regulatory mechanism is bypassed by RET-MEN2A [30].

Finally, we should mention STAT3, a latent transcription factor that is involved in the activation of many cytokine- and growth-factor-inducible genes but that, when aberrantly activated, contributes to cancer development [31]. Transactivation of STAT3 by the RET-MEN2A mutant RETC634R is required for cellular transformation in a process that is independent of JAKs and SRC [32]. By contrast, the FMTC-associated mutants RETY791F and RETS891A implicate SRC and JAKs in constitutive

activation of STAT3 [33]. Moreover, Yuan *et al.* [34] have demonstrated that RET-MEN2B mutants interact with and activate STAT3 more strongly than do RET-MEN2A mutants. These data support previous findings showing that RET-MEN2B mutants are specifically associated with SRC, of which STAT3 is one of the best-characterized targets [35]. Notably, we have found that STAT3 is activated only by gain-of-function MEN2-associated RET mutants, and not by ligand-stimulated wild-type RET (Ivan Plaza-Menacho, unpublished). The different mechanisms of receptor activation by wild-type RET and MEN2-associated RET mutants are shown in Figure 5.

Taken all together, these studies indicate that specific signaling profiles are connected with specific MEN2-associated *RET* mutations. A better understanding of the molecular mechanisms underlying this cancer

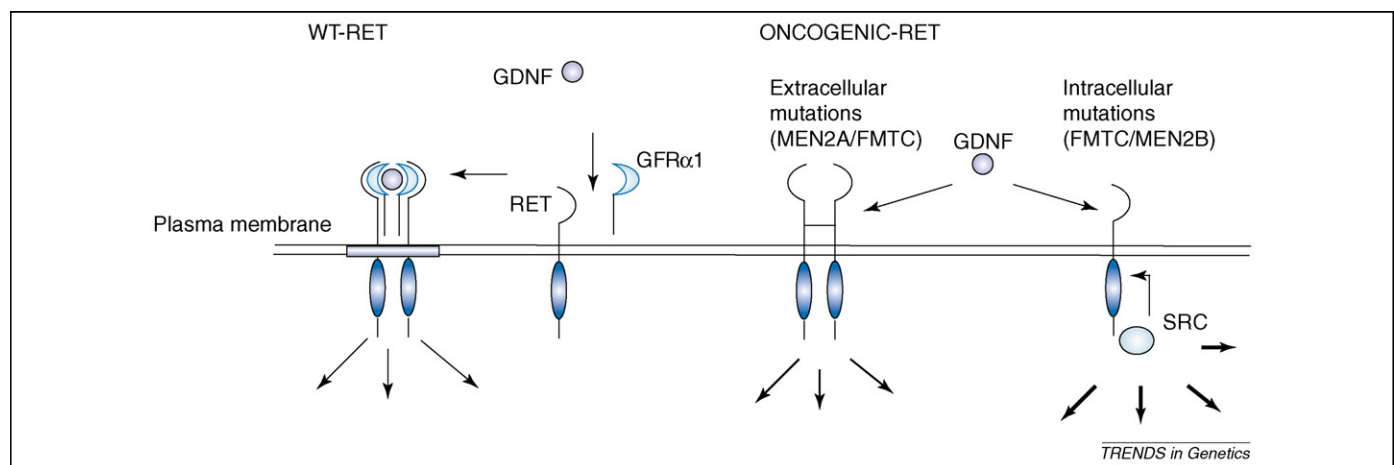


Figure 5. Possible mechanisms of activation of wild-type RET and MEN2-associated *RET* mutations. (a) Activation of wild-type RET: the ligand (GDNF) first binds to the GPI- anchor co-receptor 1 (GFRα1); RET is then recruited to form a macromolecular complex receptor. (b) Constitutive activation of RET by mutations affecting the cysteine-rich domain that cause covalent dimerization of the (mutant) receptor. (c) Aberrant activation of mutations affecting the tyrosine kinase domain of RET, resulting in monomeric oncoproteins with altered catalytic activity and altered substrate specificity that preferentially recognize substrates of cytoplasmic tyrosine kinases such as SRC or ABL. GDNF further enhances both RET-MEN2A and RET-MEN2B activity.

syndrome might ultimately help us to design new therapeutic strategies for this disease.

Polymorphisms and haplotypes in RET-associated disorders

Not only do high penetrant germline *RET* mutations have a key role in disease development, but also *RET* polymorphisms and haplotypes, containing disease-associated mutations, exist that are believed to be genetic modifiers and might be associated with an increased relative risk for the development of disorders derived from neural crest cells. These polymorphisms might interact with other genetic variants or with disease-associated germline mutations, modulating the disease phenotype or age of onset. How these polymorphisms contribute to disease development is largely unknown, but there are several possibilities: missense polymorphisms might alter the function of the protein, silent (coding) polymorphisms might be involved in aberrant splicing, and noncoding variants could regulate the level of expression. Because polymorphisms are comparatively common in the population, they could bestow a much higher attributable risk on the general population as compared with rare mutations in high-penetrance disease susceptibility genes such as *RET*.

MEN2 and FMTC

It has been suggested that the *RET* polymorphisms G691S and S904S have a modifier effect on the age of onset of *MEN2A* [36], and the same has been concluded for the single-nucleotide polymorphism (SNP) L769L in combination with the *FMTC* germline mutation Y791F [37]. It has also been proposed that the polymorphism G691S might be functional because it probably creates a new phosphorylation site affecting downstream signaling [36], or it might change the secondary structure of *RET* [38].

Sporadic MTC

Several *RET* polymorphisms have been described in association with sporadic MTC. The SNPs S836S [39,40] and IVS1-126G → T have been found to be overrepresented and associated with the somatic mutation M918T; however, other studies have not confirmed this finding [37,41,42]. A specific haplotype (the so-called 'CGGATGCCAA haplotype') containing the SNPs G691S and S904S has proved to be associated with sporadic MTC [38]. Both G691S and S904S had been previously associated with sporadic MTC and *MEN2A* [36,43].

Interestingly, SNP IVS14-24G → A, which was originally interpreted as a Hirschsprung mutation [44], has now been observed more frequently in sporadic MTC [37]. Another study has found, however, that IVS14-24G → A is not associated with either Hirschsprung or sporadic MTC [45]. Finally, a haplotype with a protective effect for sporadic MTC has been recently identified [38].

Sporadic pheochromocytoma

A low-penetrance *RET* haplotype comprising the wild-type allele at IVS1-126 and IVS1-1463 and a 16-base-pair intron-1 deletion 5' of these SNPs is strongly associated with and overrepresented in sporadic pheochromocytoma

[46]. The significant association between an individual's age of diagnosis and genotype suggests that the additive effect of the haplotypes can modulate the age of onset of the disease.

In summary, several different *RET* polymorphisms and haplotypes have been associated with different *MEN2*-related endocrine tumors. For almost all polymorphisms analyzed however, the data are inconsistent, most probably because of the small sample sizes analyzed. Thus, the significance and mechanism of action of these potential genetic modifiers remain to be demonstrated.

Hirschsprung disease

Inactivating coding sequence mutations in *RET* are responsible for a dominant form of Hirschsprung disease (with incomplete penetrance), and mutations are found in up to 50% of the familial and 15% of the sporadic cases [47]. However, ample evidence indicates that, in addition to coding sequence mutations, noncoding regions of the *RET* gene also have a chief role in the development of this disease.

This was concluded from association studies on Hirschsprung populations living in The Netherlands, Italy, France, Spain, USA and Hong Kong. The same disease-associated haplotype was observed in the 5' region of the *RET* locus in 56–62% individuals of European descent (including Americans) [48–55]. The same haplotype was also present in Asians, although at a much higher frequency (85%) [52,54]. The common haplotype spans a 27-kb region (4 kb of the 5' UTR, exon 1, intron 1 [23 kb] and exon 2 of *RET*) and strongly indicates the existence of a regulatory mutation or mutations located either in the promoter region or in intron 1 of *RET*. In addition, most of the individuals found to carry the Hirschsprung haplotype were homozygous for it. Because individuals who are homozygous for the disease-associated haplotype have a tenfold higher risk of developing the disease than heterozygous carriers, a dose-dependent action of the unknown mutation has been suggested [51].

Several groups have characterized candidate disease-associated polymorphisms [49,55–57]. Two promoter SNPs, rs10900296 and rs10900297 (also named SNP-5G > A and SNP-1A > C, respectively), located just upstream of the *RET* transcriptional start site, have been shown to reduce *RET* promoter activity in luciferase reporter assays [49,55], although others have shown that this effect is dependent on the cell lines studied [57].

Two groups have described two closely located SNPs, rs2435357 and rs2506004, in intron 1 as disease-causing candidates on the basis of association studies, functional assays and comparative genomics [52,56]. In particular, the last approach seems to be useful for judging the functional relevance of noncoding mutations, because it shows that the two disease-causing candidates are located in regulatory binding sites, which in turn are in regions that are conserved among different vertebrate species. Furthermore, mutant alleles from rs2435357 and rs2506004 show the highest associated values in affected individuals, and Emison *et al.* [52] have found that the region containing both of these SNPs reduces promoter activity in reporter assays. In addition, Grice *et al.* [58] recently generated

LacZ reporter mice that express the MCS+9.7 *RET* intron 1 region containing both rs2435357 and rs2506004 in the context of the *hsp68* promoter. Interestingly, they found that the MCS+9.7 region drives a pattern of *LacZ* expression that resembles the temporal and spatial expression of *RET* during embryonic development, which is a good indication of the relevance of this particular region for regulating *RET* expression. The transcription factor that binds to the sequence studied by Grice *et al.* [58], however, remains unidentified.

Nevertheless, many affected individuals do not have any (*RET*) mutations. In these individuals, other disease susceptibility factors must be present in the form of rare noncoding *RET* mutations or mutations at other loci either in coding or regulatory sequences.

RET as a central factor in Hirschsprung development

So far, almost all Hirschsprung-causing mutations are found in genes encoding proteins involved in the *RET* and endothelin receptor type B (*EDNRB*) signaling pathways [20]. At first, these two signaling pathways seemed to be completely unrelated. Now, however, growing evidence indicates that these two key signal transduction routes interact directly in the development of the ENS, at both the genetic and the biochemical level [53,59,60]. In a population of Old Order Mennonites, for example, it has been shown that specific alleles of the *RET* and the *EDNRB* loci are nonrandomly associated with Hirschsprung disease and are jointly transmitted to individuals much more often than expected [53,61].

To test the functional connection between the *RET* and *EDNRB* pathways, McCallion *et al.* [59] generated intercrossed mice from existing strains, resulting in offspring that were compound heterozygous for a null *RET* allele (truncating deletion at Lys748) and loss-of-function *EDNRB* alleles (*s*, piebald; *s^l*, piebald lethal) [59]. It was thought, in particular, that the combination of *Ret* and *Ednrb* genotypes (*Ret⁻/Ret⁺*; *Ednrb^s/Ednrb^s*) explained better the Hirschsprung transmission and phenotype observed in humans than did the independent mutants, thereby indicating interactions between the two pathways. McCallion *et al.* [59] also showed that 100% of the male offspring with this genotype were affected; similarly, all females manifested variable length of an aganglionic colon, although 30% had reduced clinical expression of Hirschsprung disease, which to some extent explains the sex bias observed in humans. Furthermore, compound genotypes did not have strong effects on melanocyte or renal development as compared with isolated genotypes, showing that the interaction of these genes might be specific to ENS development [59].

Work of Barlow *et al.* [60] in mice has elaborated on the spatial and temporal regulation of neural crest migration and ENS formation by the *RET* and *EDNRB* transduction routes. Seventy per cent of double homozygotes for *Ret⁵¹* and *Et-3^{ls}* (the null allele of the ligand of *Ednrb*) developed total intestinal aganglionosis, again indicating a strong interaction between these two loci [62]. cAMP-dependent protein kinase A (PKA) has been pinpointed as a likely candidate that mediates interactions between the *RET* and *EDNRB* pathways, because inhibition of PKA mimics

the effect of ET-3 (proliferation and inhibition of migration) on neural crest cells (NCCs) [60]. One of the possible mechanisms of PKA action on *RET* signaling is via Ser696 of *RET*. Phosphorylation of this residue by PKA promotes lamellipodia formation in neuroectodermal cells and thereby stimulates migration [63].

When the genetic and biochemical evidence is taken together, the central role of *RET* in ENS development and Hirschsprung disease is unquestionable. Nevertheless, regulation of *RET* signaling by other receptors, growth and transcription factors along the developing gut is certainly necessary for proper development of the ENS.

Hirschsprung combined with MEN2

Mutations of extracellular residues Cys609, Cys611, Cys618 and Cys620, which were primarily thought to be specific for MEN2A and FMTC, have also been identified in individuals with (sporadic) Hirschsprung disease and in MEN2A families in which Hirschsprung sometimes segregates with MEN2A or FMTC [64]. These mutations have a dual impact on *RET*. On the one hand, they constitutively activate *RET* through the formation of covalent dimers; and on the other hand, they result in a marked reduction of *RET* expression at the plasma membrane. This leads to uncontrolled proliferation of thyroid C-cells, as seen in MEN2A and FMTC, and in apoptosis of enteric neurons, as seen in Hirschsprung disease. The reason why C-cells hyperproliferate and enteric neurons undergo apoptosis is probably due to differences in sensitivity to GDNF. MEN2A mutations such as C634R are responsive to GDNF, whereas Hirschsprung–MEN2A and Hirschsprung–FMTC mutations of *RET* (e.g. C620R) do not respond to GDNF [65]. Insensitivity to GDNF renders cells more prone to apoptosis, and these features are shared by all Hirschsprung-associated mutations of *RET* [66].

RET as a therapeutic target

Using drugs to target various (constitutively activated) tyrosine kinases has been a recent success in the fight against cancer; for example, Herceptin, Imatinib and Gefitinib have been successfully used in breast cancer, gastrointestinal stromal tumors and non-small-cell lung cancers, respectively [67]. This success has directed attention to *RET* as a possible therapeutic target in MEN2 and FMTC because so far no systematic treatment for individuals with MEN2 is available [68]. All of the crucial steps in the activation and signaling of *RET* might be subject to specific inhibitors.

The most potent therapeutic drugs are expected to come from tyrosine kinase inhibitors. Imatinib (Glivec or Gleevec) shows inhibitory activity against *RET*–MEN2A and *RET*–MEN2B in MTC-derived cell lines and induces degradation of *RET*; however, the concentrations needed to inhibit cellular proliferation are high [69,70]. Encouraging results have been obtained with another tyrosine kinase inhibitor, BAY43–9006 [71], although resistance might become a problem, as has been previously demonstrated for *RET* [72].

Another elegant approach to targeting *RET* might be the inhibition of *RET* dimer formation. The neutralizing, nuclease-resistant D4 aptamer can bind and inhibit

wild-type RET and RET-MEN2A on the cell surface [73]. The efficacy of D4 as a therapy for RET-associated tumors remains to be established.

Another approach might be to use SHP-1, a cytoplasmic phosphatase that can associate with mutated RET, thereby reducing its degree of autophosphorylation and consequently suppressing growth-promoting signals mediated by the RET-induced MAPK pathway [74,75]. This reduction in autophosphorylation is activated by somatotropin release-inhibiting factor [74].

Another option that has been explored is to target RET with monoclonal antibodies. Yano *et al.* [76] have generated an antibody that can induce internalization of RET, but its efficacy has not been demonstrated. Alternatively, gene therapy might become available. Inhibition of oncogenic RET signaling by expression of a dominant-negative RET mutant has been investigated and reviewed by Putzer *et al.* [68]. Another gene therapy approach might be the introduction of a RET-selective ribozyme that specifically cuts mutant *RET* mRNA and blocks RET-mediated cell growth and transformation [77].

In addition to the above approaches, which all focus on RET, one might of course target downstream signaling proteins of (mutant) RET. In summary, the RET receptor represents a potential therapeutic target in the neuroendocrine tumors observed in MEN2, in which RET dysfunction has a crucial role.

Conclusions

In conclusion, *RET* provides an excellent example of how mutations, either alone or as part of a polygenic model, can give rise to different (inherited) human diseases by altering the signaling properties and transcriptional regulation of the protein encoded. Unraveling the genetic and molecular mechanisms underlying the different RET-related neural crest disorders not only has been a success in the history of genetic medicine but also has helped us to understand how these different diseases develop and might contribute to the development of new therapeutic strategies.

Acknowledgements

Supported by grants from the Groningen University Institute for Drug Exploration, The Ubbo Emmius Programme of the University of Groningen and the Netherlands Organization for Scientific Research (no. 901-04-225).

References

- Ceccherini, I. *et al.* (1993) Exon structure and flanking intronic sequences of the human *RET* proto-oncogene. *Biochem. Biophys. Res. Commun.* 196, 1288–1295
- Myers, S.M. *et al.* (1995) Characterization of *RET* proto-oncogene 3 splicing variants and polyadenylation sites: a novel C-terminus for RET. *Oncogene* 11, 2039–2045
- Iwashita, T. *et al.* (1999) Biological and biochemical properties of RET with kinase domain mutations identified in multiple endocrine neoplasia type 2B and familial medullary thyroid carcinoma. *Oncogene* 18, 3919–3922
- de Graaff, E. *et al.* (2001) Differential activities of the RET tyrosine kinase receptor isoforms during mammalian embryogenesis. *Genes Dev.* 15, 2433–2444
- Baloh, R.H. *et al.* (2000) The GDNF family ligands and receptors – implications for neural development. *Curr. Opin. Neurobiol.* 10, 103–110
- Jing, S. *et al.* (1996) GDNF-induced activation of the RET protein tyrosine kinase is mediated by GDNFR- α , a novel receptor for GDNF. *Cell* 85, 1113–1124
- Airaksinen, M.S. *et al.* (1999) GDNF family neurotrophic factor signaling: four masters, one servant? *Mol. Cell. Neurosci.* 13, 313–325
- Marcos, C. and Pachnis, V. (1996) The effect of the *ret*-mutation on the normal development of the central and parasympathetic nervous systems. *Int. J. Dev. Biol. (Suppl. 1)*, 137S–138S
- Santoro, M. *et al.* (1990) The *ret* proto-oncogene is consistently expressed in human pheochromocytomas and thyroid medullary carcinomas. *Oncogene* 5, 1595–1598
- Grieco, M. *et al.* (1990) PTC is a novel rearranged form of the *ret* proto-oncogene and is frequently detected *in vivo* in human thyroid papillary carcinomas. *Cell* 60, 557–563
- Klugbauer, S. and Rabes, H.M. (1999) The transcription coactivator HTIF1 and a related protein are fused to the RET receptor tyrosine kinase in childhood papillary thyroid carcinomas. *Oncogene* 18, 4388–4393
- Hansford, J.R. and Mulligan, L.M. (2000) Multiple endocrine neoplasia type 2 and RET: from neoplasia to neurogenesis. *J. Med. Genet.* 37, 817–827
- Parisi, M.A. and Kapur, R.P. (2000) Genetics of Hirschsprung disease. *Curr. Opin. Pediatr.* 12, 610–617
- Arighi, E. *et al.* (2005) RET tyrosine kinase signaling in development and cancer. *Cytokine Growth Factor Rev.* 16, 441–467
- Saarma, M. (2001) GDNF recruits the signaling crew into lipid rafts. *Trends Neurosci.* 24, 427–429
- Ichihara, M. *et al.* (2004) RET and neuroendocrine tumors. *Cancer Lett.* 204, 197–211
- Tsui-Pierchala, B.A. *et al.* (2002) NGF utilizes c-Ret via a novel GFL-independent, inter-RTK signaling mechanism to maintain the trophic status of mature sympathetic neurons. *Neuron* 33, 261–273
- Sipple, J.H. (1961) The association of pheochromocytoma with carcinoma of the thyroid gland. *Am. J. Med.* 31, 163–166
- Carney, J.A. *et al.* (1976) Alimentary tract ganglioneuromatosis. A major component of the syndrome of multiple endocrine neoplasia, type 2b. *N. Engl. J. Med.* 295, 1287–1291
- Brooks, A.S. (2005) Studying the genetics of Hirschsprung's disease: unraveling an oligogenic disorder. *Clin. Genet.* 67, 6–14
- Yip, L. *et al.* (2003) Multiple endocrine neoplasia type 2: evaluation of the genotype–phenotype relationship. *Arch. Surg.* 138, 409–416
- Iwashita, T. *et al.* (2001) Functional analysis of RET with Hirschsprung mutations affecting its kinase domain. *Gastroenterology* 121, 24–33
- Borgarzone, I. *et al.* (1998) Full activation of MEN2B mutant RET by an additional MEN2A mutation or by ligand GDNF stimulation. *Oncogene* 16, 2295–2301
- Murakami, H. *et al.* (1999) Enhanced phosphatidylinositol 3-kinase activity and high phosphorylation state of its downstream signalling molecules mediated by RET with the MEN2B mutation. *Biochem. Biophys. Res. Commun.* 262, 68–75
- Salvatore, D. *et al.* (2001) Increased *in vivo* phosphorylation of Ret tyrosine 1062 is a potential pathogenetic mechanism of multiple endocrine neoplasia type 2B. *Cancer Res.* 61, 1426–1431
- Liu, X. *et al.* (1996) Oncogenic RET receptors display different autophosphorylation sites and substrate binding specificities. *J. Biol. Chem.* 271, 5309–5312
- Kawamoto, Y. *et al.* (2004) Identification of RET autophosphorylation sites by mass spectrometry. *J. Biol. Chem.* 279, 14213–14224
- Boccardi, R. *et al.* (1997) The multiple endocrine neoplasia type 2B point mutation switches the specificity of the Ret tyrosine kinase towards cellular substrates that are susceptible to interact with Crk and Nck. *Oncogene* 15, 2257–2265
- Murakami, H. *et al.* (2002) Role of Dok1 in cell signaling mediated by RET tyrosine kinase. *J. Biol. Chem.* 277, 32781–32790
- Freche, B. *et al.* (2005) Inducible dimerization of RET reveals a specific AKT deregulation in oncogenic signaling. *J. Biol. Chem.* 280, 36584–36591
- Schindler, C. and Darnell, J.E. (1995) Transcriptional responses to polypeptide ligands: the JAK–STAT pathway. *Annu. Rev. Biochem.* 64, 621–651
- Schuringa, J. *et al.* (2001) MEN2A RET induces cellular transformation via STAT3. *Oncogene* 20, 5350–5358

- 33 Plaza-Menacho, I. *et al.* (2005) RET-FMTC mutants Y791F and S891A activate a Src/JAK/STAT3 pathway independent of GDNF. *Cancer Res.* 65, 1729–1737
- 34 Yuan, Z. *et al.* (2004) Central role of the threonine residue within the p+1 loop of receptor tyrosine kinase in STAT3 constitutive phosphorylation in metastatic cancer cells. *Mol. Cell. Biol.* 24, 9390–9400
- 35 Bromberg, J.F. *et al.* (1998) Stat3 activation is required for cellular transformation by v-src. *Mol. Cell. Biol.* 18, 2553–2558
- 36 Robledo, M. *et al.* (2003) Polymorphisms G691S/S904S of RET as genetic modifiers of MEN 2A. *Cancer Res.* 63, 1814–1817
- 37 Baumgartner-Parzer, S.M. *et al.* (2005) Polymorphisms in exon 13 and intron 14 of the RET proto-oncogene: genetic modifiers of medullary thyroid carcinoma? *J. Clin. Endocrinol. Metab.* 90, 6232–6236
- 38 Cebrian, A. *et al.* (2005) Polymorphisms in the initiators of RET signalling pathway and susceptibility to sporadic medullary thyroid carcinoma. *J. Clin. Endocrinol. Metab.* 90, 6268–6274
- 39 Gimm, O. *et al.* (1999) Over-representation of a germline RET sequence variant in patients with sporadic medullary thyroid carcinoma and somatic RET codon 918 mutation. *Oncogene* 18, 1369–1373
- 40 Ruiz, A. *et al.* (2001) Germline sequence variant S836S in the RET proto-oncogene is associated with low level predisposition to sporadic medullary thyroid carcinoma in the Spanish population. *Clin. Endocrinol.* 55, 399–402
- 41 Berard, I. *et al.* (2004) Germline-sequence variants S836S and L769L in the RE arranged during Transfection (RET) proto-oncogene are not associated with predisposition to sporadic medullary carcinoma in the French population. *Clin. Genet.* 65, 150–152
- 42 Wiench, M. *et al.* (2004) RET polymorphisms in codons 769 and 836 are not associated with predisposition to medullary thyroid carcinoma. *Cancer Detect. Prev.* 28, 231–236
- 43 Elisei, R. *et al.* (2004) Identification of a novel point mutation in the RET gene (Ala883Thr), which is associated with medullary thyroid carcinoma phenotype only in homozygous condition. *J. Clin. Endocrinol. Metab.* 89, 5823–5827
- 44 Gath, R. *et al.* (2001) Analysis of the RET, GDNF, EDN3, and EDNRB genes in patients with intestinal neuronal dysplasia and Hirschsprung disease. *Gut* 48, 671–675
- 45 Fitze, G. *et al.* (2003) Novel intronic polymorphisms in the RET proto-oncogene and their association with Hirschsprung disease. *Hum. Mutat.* 22, 177
- 46 McWhinney, S.R. *et al.* (2003) Intronic single nucleotide polymorphisms in the RET protooncogene are associated with a subset of apparently sporadic pheochromocytoma and may modulate age of onset. *J. Clin. Endocrinol. Metab.* 88, 4911–4916
- 47 Hofstra, R.M. *et al.* (2000) RET and GDNF gene scanning in Hirschsprung patients using two dual denaturing gel systems. *Hum. Mutat.* 15, 418–429
- 48 Borrego, S. *et al.* (2003) A founding locus within the RET proto-oncogene may account for a large proportion of apparently sporadic Hirschsprung disease and a subset of cases of sporadic medullary thyroid carcinoma. *Am. J. Hum. Genet.* 72, 88–100
- 49 Fitze, G. *et al.* (2003) Functional haplotypes of the RET proto-oncogene promoter are associated with Hirschsprung disease (HSCR). *Hum. Mol. Genet.* 12, 3207–3214
- 50 Sancandi, M. *et al.* (2003) Single nucleotide polymorphic alleles in the 5' region of the RET proto-oncogene define a risk haplotype in Hirschsprung disease. *J. Med. Genet.* 40, 714–718
- 51 Burzynski, G.M. *et al.* (2004) Localizing a putative mutation as the major contributor to the development of sporadic Hirschsprung disease to the RET genomic sequence between the promoter region and exon 2. *Eur. J. Hum. Genet.* 12, 604–612
- 52 Emison, E.S. *et al.* (2005) A common sex-dependent mutation in a RET enhancer underlies Hirschsprung disease risk. *Nature* 434, 857–863
- 53 Carrasquillo, M.M. *et al.* (2002) Genome-wide association study and mouse model identify interaction between RET and EDNRB pathways in Hirschsprung disease. *Nat. Genet.* 32, 237–244
- 54 Pelet, A. *et al.* (2005) Homozygosity for a frequent and weakly penetrant predisposing allele at the RET locus in sporadic Hirschsprung disease. *J. Med. Genet.* 42, e18
- 55 Garcia-Barcelo, M. *et al.* (2005) TTF-1 and RET promoter SNPs: regulation of RET transcription in Hirschsprung's disease. *Hum. Mol. Genet.* 14, 191–204
- 56 Burzynski, G.M. *et al.* (2005) Identifying candidate Hirschsprung disease associated RET variants. *Am. J. Hum. Genet.* 76, 850–858
- 57 Griseri, P. *et al.* (2005) A common haplotype at the 5' end of the RET proto-oncogene, overrepresented in Hirschsprung patients, is associated with reduced gene expression. *Hum. Mutat.* 25, 189–195
- 58 Grice, E.A. *et al.* (2005) Evaluation of the RET regulatory landscape reveals the biological relevance of a HSCR-implicated enhancer. *Hum. Mol. Genet.* 14, 3837–3845
- 59 McCallion, A.S. *et al.* (2003) Phenotype variation in two-locus mouse models of Hirschsprung disease: tissue-specific interaction between Ret and Ednrb. *Proc. Natl. Acad. Sci. U. S. A.* 100, 1826–1831
- 60 Barlow, A. *et al.* (2003) Enteric nervous system progenitors are coordinately controlled by the G protein-coupled receptor EDNRB and the receptor tyrosine kinase RET. *Neuron* 40, 905–916
- 61 Puffenberger, E.G. *et al.* (1994) A missense mutation of the endothelin-B receptor gene in multigenic Hirschsprung's disease. *Cell* 79, 1257–1266
- 62 Hosoda, K. *et al.* (1994) Targeted and natural (piebald-lethal) mutations of endothelin-B receptor gene produce megacolon associated with spotted coat color in mice. *Cell* 79, 1267–1276
- 63 Fukuda, T. *et al.* (2002) Novel mechanism of regulation of Rac activity and lamellipodia formation by RET tyrosine kinase. *J. Biol. Chem.* 277, 19114–19121
- 64 Takahashi, M. (1999) Co-segregation of MEN2 and Hirschsprung's disease: the same mutation of RET with both gain and loss-of-function? *Hum. Mutat.* 13, 331–336
- 65 Arighi, E. *et al.* (2004) Biological effects of the dual phenotypic Janus mutation of ret cosegregating with both multiple endocrine neoplasia type 2 and Hirschsprung's disease. *Mol. Endocrinol.* 18, 1004–1017
- 66 Mograbi, B. *et al.* (2001) The sensitivity of activated Cys Ret mutants to glial cell line-derived neurotrophic factor is mandatory to rescue neuroectodermic cells from apoptosis. *Mol. Cell. Biol.* 21, 6719–6730
- 67 Gschwind, A. *et al.* (2004) The discovery of receptor tyrosine kinases: targets for cancer therapy. *Nat. Rev. Cancer* 4, 361–370
- 68 Putzer, B.M. *et al.* (2004) The RET proto-oncogene: a potential target for molecular cancer therapy. *Trends Mol. Med.* 10, 351–357
- 69 Cohen, M.S. *et al.* (2002) Inhibition of medullary thyroid carcinoma cell proliferation and RET phosphorylation by tyrosine kinase inhibitors. *Surgery* 132, 960–966
- 70 de Groot, J.W. *et al.* (2006) Cellular effects of Imatinib on medullary thyroid cancer cells harboring multiple endoplasia type 2A and 2B associated RET mutations. *Surgery* 139, 806–814
- 71 Carlomagno, F. *et al.* (2006) BAY 43-9006 inhibition of oncogenic RET mutants. *J. Natl. Cancer Inst.* 98, 326–334
- 72 Carlomagno, F. *et al.* (2002) The kinase inhibitor PP1 blocks tumorigenesis induced by RET oncogenes. *Cancer Res.* 62, 1077–1082
- 73 Cerchia, L. *et al.* (2005) Neutralizing aptamers from whole-cell SELEX inhibit the RET receptor tyrosine kinase. *PLoS Biol.* 3, e123
- 74 Hennige, A.M. *et al.* (2001) Inhibition of Ret oncogene activity by the protein tyrosine phosphatase SHP1. *Endocrinology* 142, 4441–4447
- 75 Zatelli, M.C. *et al.* (2005) Src homology-2-containing protein tyrosine phosphatase-1 restrains cell proliferation in human medullary thyroid carcinoma. *Endocrinology* 146, 2692–2698
- 76 Yano, L. *et al.* (2000) Improved gene transfer to neuroblastoma cells by a monoclonal antibody targeting RET, a receptor tyrosine kinase. *Hum. Gene Ther.* 11, 995–1004
- 77 Parthasarathy, R. *et al.* (1999) Hammerhead ribozyme-mediated inactivation of mutant RET in medullary thyroid carcinoma. *Cancer Res.* 59, 3911–3914
- 78 Ito, S. *et al.* (1997) Biological properties of Ret with cysteine mutations correlate with multiple endocrine neoplasia type 2A, familial medullary thyroid carcinoma, and Hirschsprung's disease phenotype. *Cancer Res.* 57, 2870–2872
- 79 Michiels, F.M. *et al.* (1997) Development of medullary thyroid carcinoma in transgenic mice expressing the RET proto-oncogene altered by a multiple endocrine neoplasia type 2A mutation. *Proc. Natl. Acad. Sci. U. S. A.* 94, 3330–3335
- 80 Kawai, K. *et al.* (2000) Tissue-specific carcinogenesis in transgenic mice expressing the RET proto-oncogene with a multiple endocrine neoplasia type 2A mutation. *Cancer Res.* 60, 5254–5260
- 81 Carlomagno, F. *et al.* (1998) Glial cell line-derived neurotrophic factor differentially stimulates ret mutants associated with the multiple endocrine neoplasia type 2 syndromes and Hirschsprung's disease. *Endocrinology* 139, 3613–3619

- 82 Gestblom, C. *et al.* (1999) Sympathoadrenal hyperplasia causes renal malformations in RET (MEN2B)-transgenic mice. *Am. J. Pathol.* 155, 2167–2179
- 83 Smith-Hicks, C.L. (2000) C-cell hyperplasia, pheochromocytoma and sympathoadrenal malformation in a mouse model of multiple endocrine neoplasia type 2B. *EMBO J.* 19, 612–622
- 84 Acton, D.S. *et al.* (2000) Multiple endocrine neoplasia type 2B mutation in human RET oncogene induces medullary thyroid carcinoma in transgenic mice. *Oncogene* 19, 3121–3125
- 85 Schuchardt, A. *et al.* (1994) Defects in the kidney and enteric nervous system of mice lacking the tyrosine kinase receptor Ret. *Nature* 367, 380–383

Elsevier.com – linking scientists to new research and thinking

Designed for scientists' information needs, Elsevier.com is powered by the latest technology with customer-focused navigation and an intuitive architecture for an improved user experience and greater productivity.

As a world-leading publisher of scientific, technical and health information, Elsevier is dedicated to linking researchers and professionals to the best thinking in their fields. We offer the widest and deepest coverage in a range of media types to enhance cross-pollination of information, breakthroughs in research and discovery, and the sharing and preservation of knowledge.

Elsevier. Building insights. Breaking boundaries.
www.elsevier.com

Have you contributed to an Elsevier publication? Did you know that you are entitled to a 30% discount on books?

A 30% discount is available to all Elsevier book and journal contributors when ordering books or stand-alone CD-ROMs directly from us.

To take advantage of your discount:

1. Choose your book(s) from www.elsevier.com or www.books.elsevier.com

2. Place your order

Americas:

Phone: +1 800 782 4927 for US customers

Phone: +1 800 460 3110 for Canada, South and Central America customers

Fax: +1 314 453 4898

author.contributor@elsevier.com

All other countries:

Phone: +44 (0)1865 474 010

Fax: +44 (0)1865 474 011

directorders@elsevier.com

You'll need to provide the name of the Elsevier book or journal to which you have contributed. Shipping is free on prepaid orders within the US.

If you are faxing your order, please enclose a copy of this page.

3. Make your payment

This discount is only available on prepaid orders. Please note that this offer does not apply to multi-volume reference works or Elsevier Health Sciences products.

For more information, visit www.books.elsevier.com